

Loris Verron  
June 21<sup>th</sup>, 2022

# Availability of earth for light earth building: modelling using spatialized pedological data in Brittany

**Authors:** Loris VERRON, Erwan HAMARD, Andry RAZAKAMANANTSOA, Bogdan CAZACLIU, Myriam DUC



Université  
Gustave Eiffel

# Introduction





# Introduction

## Raw earth

- Not fired
- No hydraulic binder (cement/lime)
  - **No combustion energy need**
  - **Infinitely reversible or “compostable”**
  - **On-site excavation : no transportation**  
→ *Sustainable !*
- **Free and abundant material**
- **Labour intensive : local economy**  
→ *Socially inclusive !*

# Introduction

## Raw earth

- Not fired
- No hydraulic binder (cement/lime)
  - **No combustion energy need**
  - **Infinitely reversible or "compostable"**
  - **On-site excavation : no transportation**  
→ *Sustainable !*
- **Free and abundant material**
- **Labour intensive : local economy**  
→ *Socially inclusive !*

# Introduction : raw earth building

Rammed earth  
(pisé)

Cob (bauge)



Chantier : Ghislain Maetz, Architecte : Amélie Le Paih, Vidéo : Sunmetron



A rammed earth building in Lyon.  
Photo : Emmanuel Mille

# Introduction : light earth



Réalisation et vidéo : Eco Pertica

# Objectives

- Quantification & spatial distribution
- Excavated earth potentials



Contents lists available at [ScienceDirect](#)

## Resources, Conservation & Recycling

journal homepage: [www.elsevier.com/locate/resconrec](http://www.elsevier.com/locate/resconrec)



Full length article

### Estimating and mapping the availability of earth resource for light earth building using a soil geodatabase in Brittany (France)

Loris Verron<sup>a,\*</sup>, Erwan Hamard<sup>a</sup>, Bogdan Cazacliu<sup>a</sup>, Andry Razakamanantsoa<sup>b</sup>, Myriam Duc<sup>c</sup>, Théo Vincelas<sup>d</sup>, Arthur Hellouin de Menibus<sup>e</sup>, Blandine Lemerrier<sup>f</sup>, Rhoda Julia Ansa-Asare<sup>b</sup>, Thibaut Lecompte<sup>g</sup>

<sup>a</sup> MAST-GPEM, Université Gustave Eiffel, Bouguenais F-44344, France  
<sup>b</sup> GERS-GIE, Université Gustave Eiffel, Bouguenais F-44344, France  
<sup>c</sup> GERS-SRO, Université Gustave Eiffel, Marne-la-Vallée F-77454, France  
<sup>d</sup> UniLaSalle, ULR7519 - Transformations & Agro-Ressources, Normandie University, Mont-Saint Aignan F-76130, France  
<sup>e</sup> French association of hemp producer in short circuits, Mas de Saint Gelly Bouquet, 30580, France  
<sup>f</sup> UMR SAS, Institut Agro, INRAE, Rennes F-35000, France  
<sup>g</sup> UMR CNRS 6027, IRDL, Université Bretagne-Sud, Lorient, F-56100, France

#### ARTICLE INFO

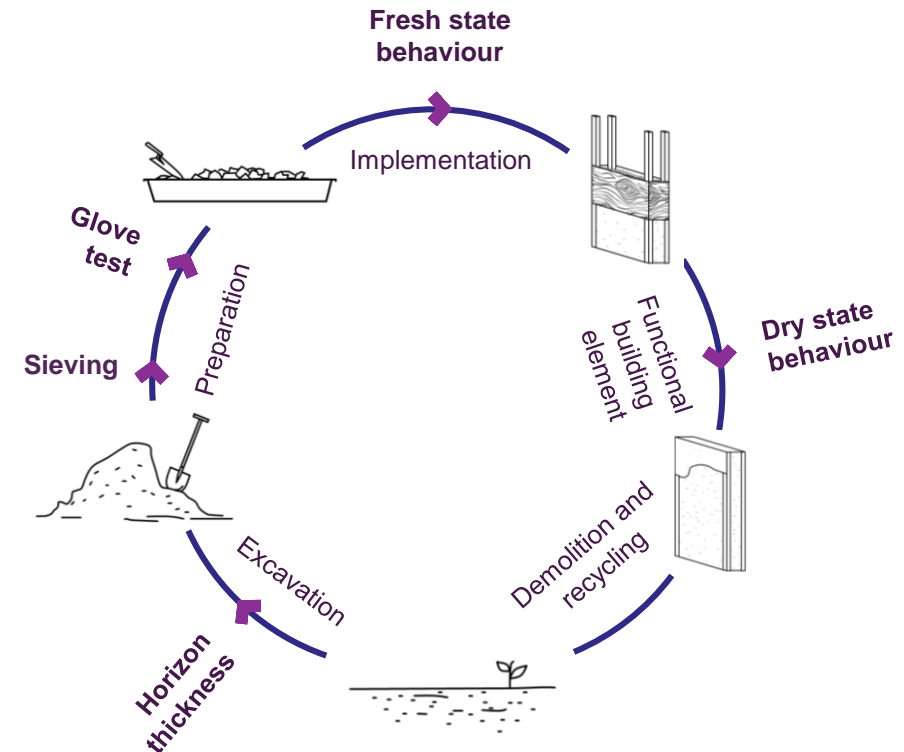
**Keywords:**  
Earth building  
Light earth  
Pedology  
Soil suitability  
Material flow analysis

#### ABSTRACT

Light earth is a natural insulating material composed of earth and vegetal fibres. It can be used to insulate existing and new buildings to reduce energy and resources consumption, and excavated earth generation by the construction sector. A pedological database is crossed with suitability thresholds in order to evaluate spatially the availability of earth resources. Then, the soil suitability is mapped, and suitable soil amounts metrics are estimated for Brittany territory. A sensitivity analysis is performed to understand the potential variability of the results. Study estimates that 48% of Brittany's soil horizons are suitable for light earth building. Every year, 1.3 Mt of suitable soil are excavated in Brittany. Using only these excavated earths, all existing and new buildings in Brittany could be insulated with light-earth in less than 8 years. This study shows that suitable earth availability is not a limiting factor to develop light earth insulation in Brittany.



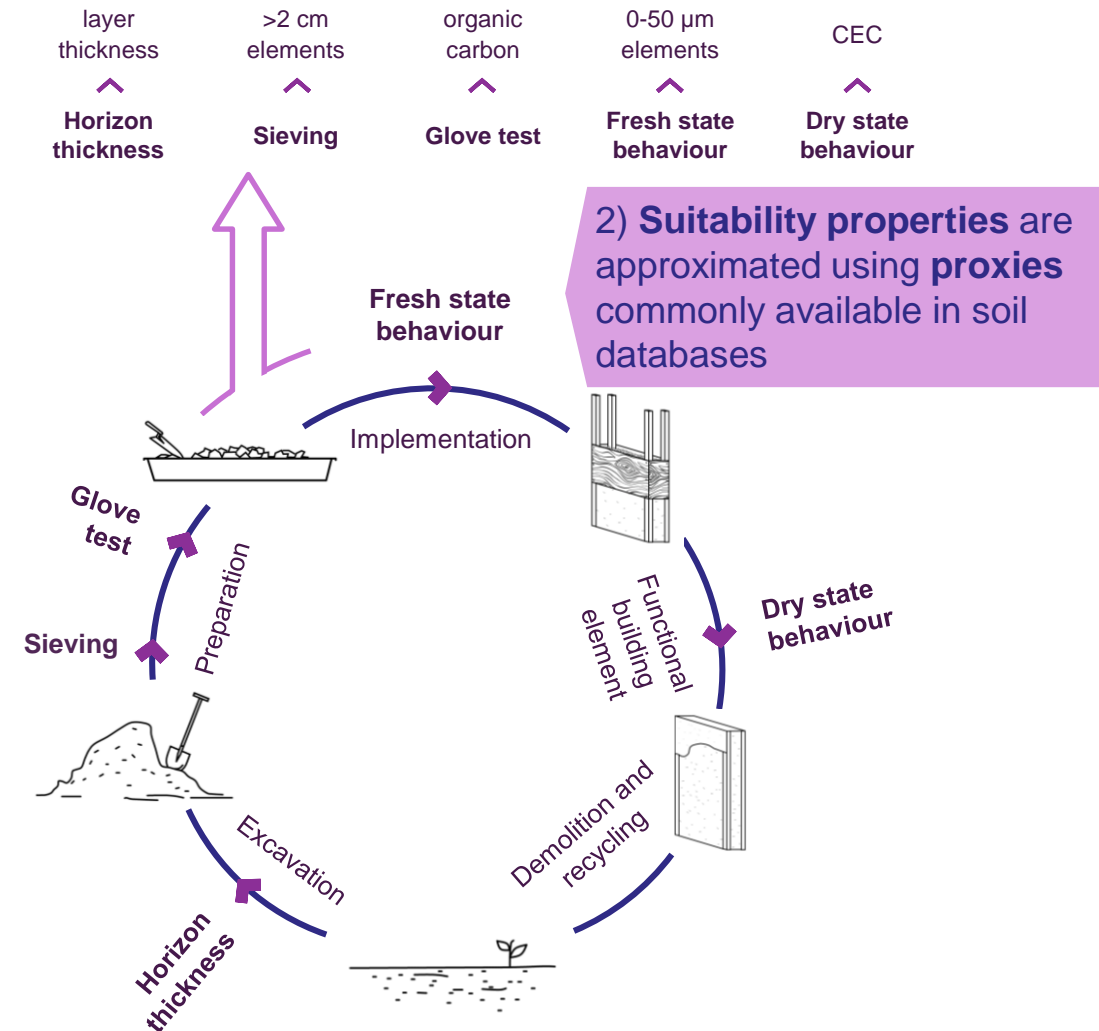
# Methods



1) Soil suitability for earth building depends on **suitability properties** that are located all along the building life cycle



# Methods



1) Soil suitability for earth building depends on **suitability properties** that are located all along the building life cycle

# Methods

3) Proxies thresholds are applied to a pedological database

layer thickness  
Horizon thickness

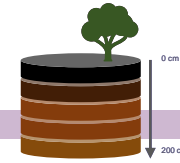
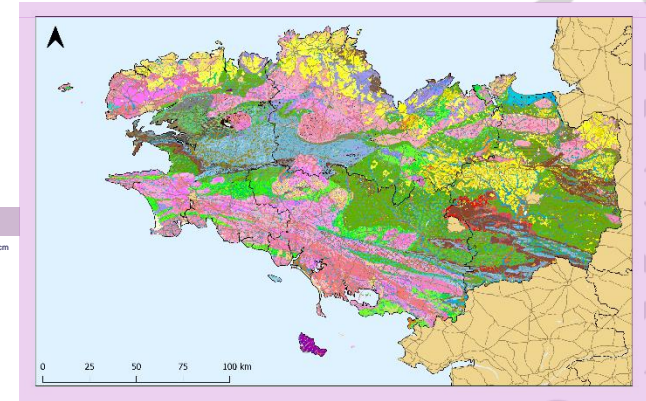
>2 cm elements  
Sieving

organic carbon  
Glove test

0-50 µm elements  
Fresh state behaviour

CEC  
Dry state behaviour

2) Suitability properties are approximated using proxies commonly available in soil databases



Fresh state behaviour

Implementation

Functional building element

Dry state behaviour

Demolition and recycling

Excavation

Horizon thickness

Preparation

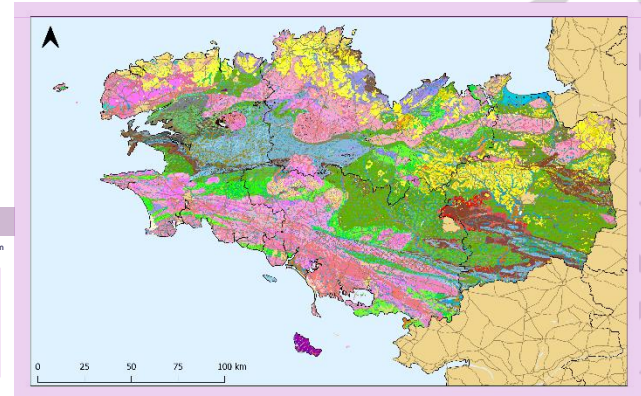
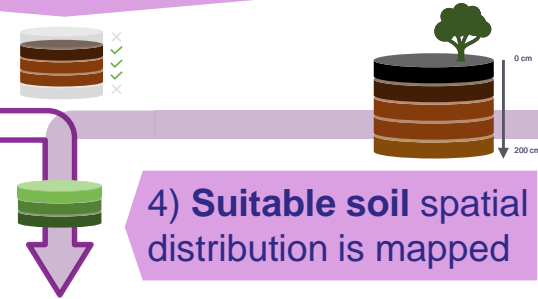
Glove test

Sieving

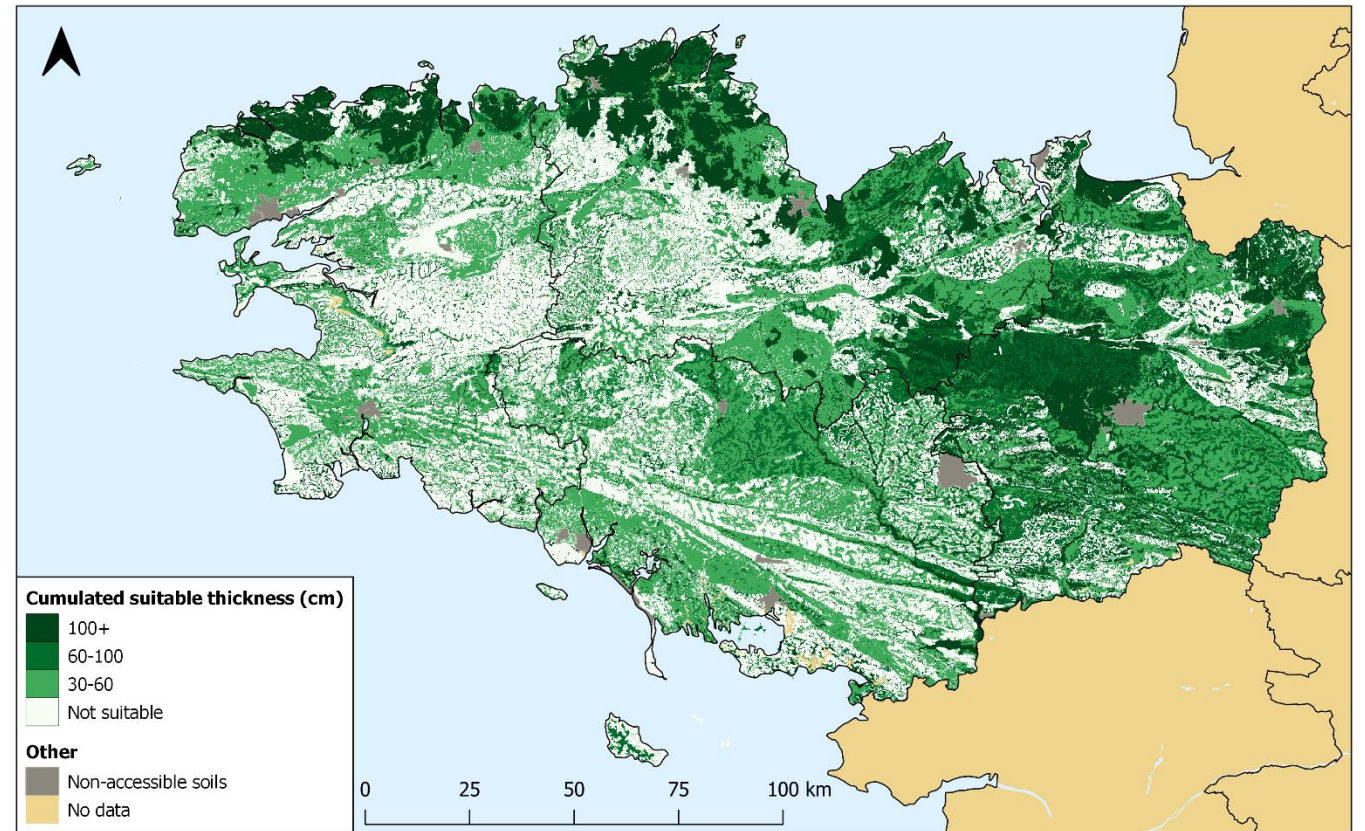
1) Soil suitability for earth building depends on **suitability properties** that are located all along the building life cycle

# Methods

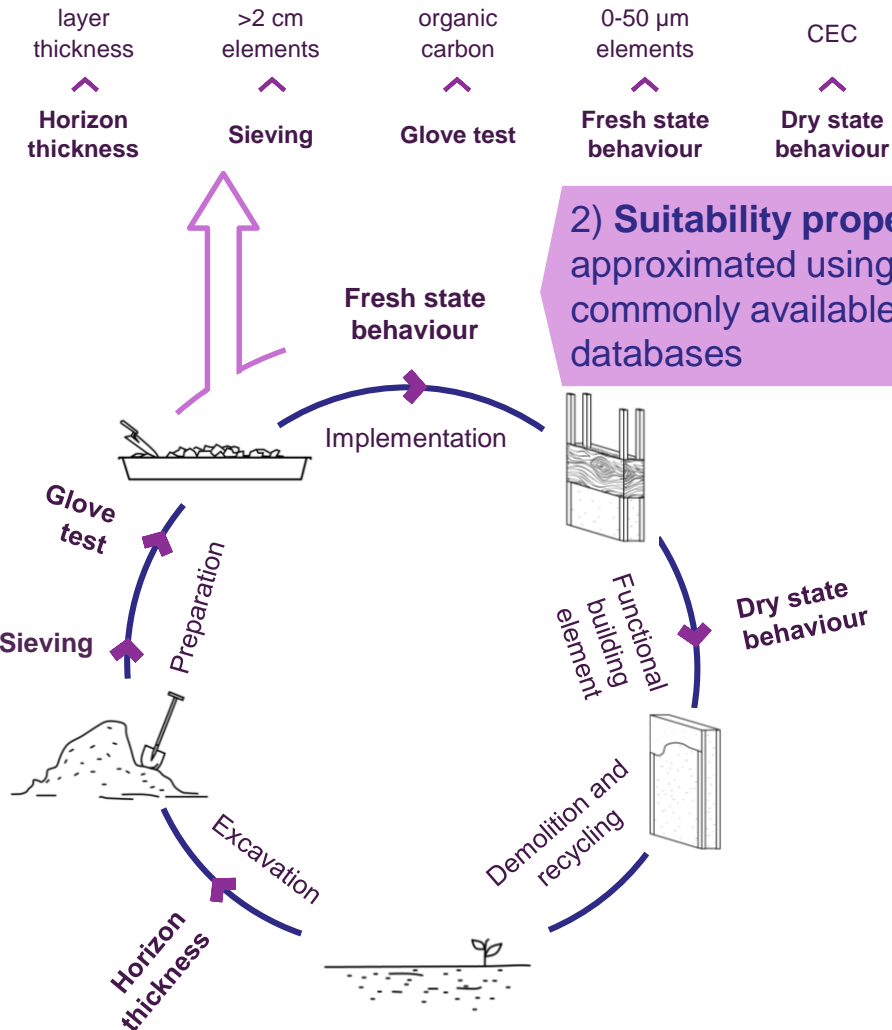
3) Proxies thresholds are applied to a pedological database



4) Suitable soil spatial distribution is mapped



2) Suitability properties are approximated using proxies commonly available in soil databases

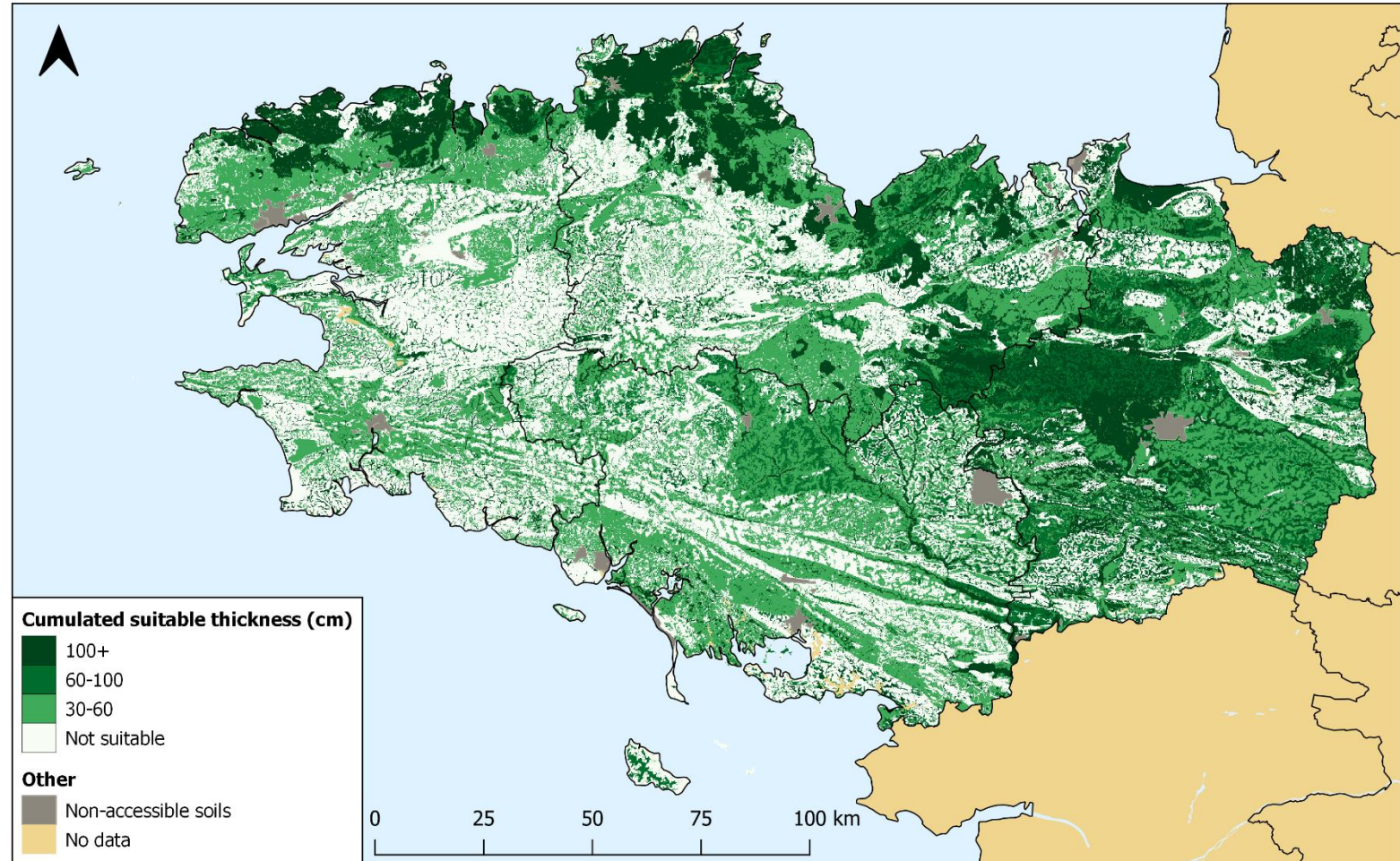


1) Soil suitability for earth building depends on **suitability properties** that are located all along the building life cycle

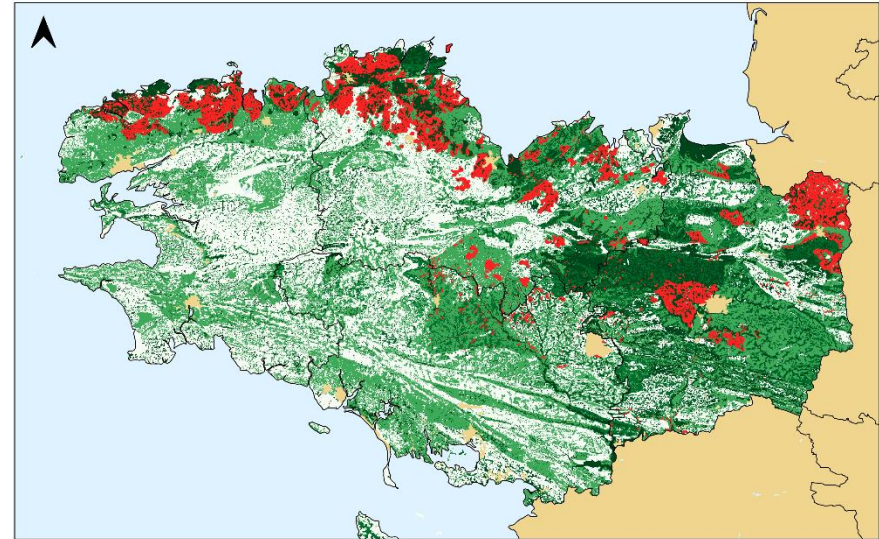


# Results : suitable soils distribution

- **Well distributed :**  
99.5% of the territory is at less than 1 km of a suitable soil resource.
- **High suitability :**  
48% of the total soil volume in Brittany could technically be used for light earth building.



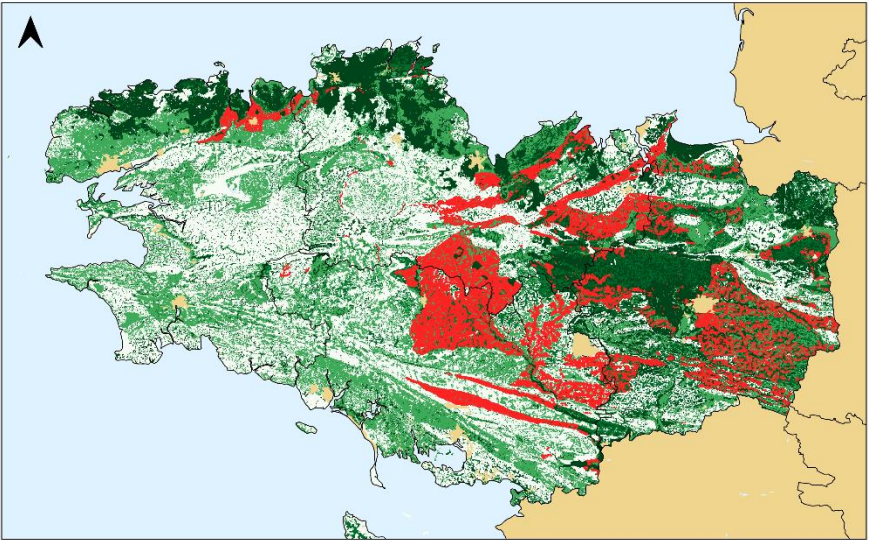
# Results : suitable soils



NEOLUVISOL profond issu de limon éolien					N°256		
		F <sub>50/2000</sub>	CEC	OC	F <sub>2000/D</sub>	T	Suitable
0	1	22	8.7	17.1	1	50	Yes
50	2	21	4.2	5.5	1	-	No
80	3	18	6.11	1.8	1	180	Yes
260	Total surface					Suit. volume	
	876 km² (3.24%)					2.0 km³ (15.8%)	

# Results : suitable soils

BRUNISOL moyennement profond issu de schiste tendre souvent altéré						N°51
	F <sub>50/2000</sub>	CEC	OC	F <sub>2000/D</sub>	T	Suitable
LA	18	8.5	16.5	10	50	Yes
S	27	5.3	10.2	15	50	Yes
C	30	5.2	3.1	25	-	No
Total surface					Suit. volume	
1453 km² (5.4%)					0.64 km³ (5.1%)	



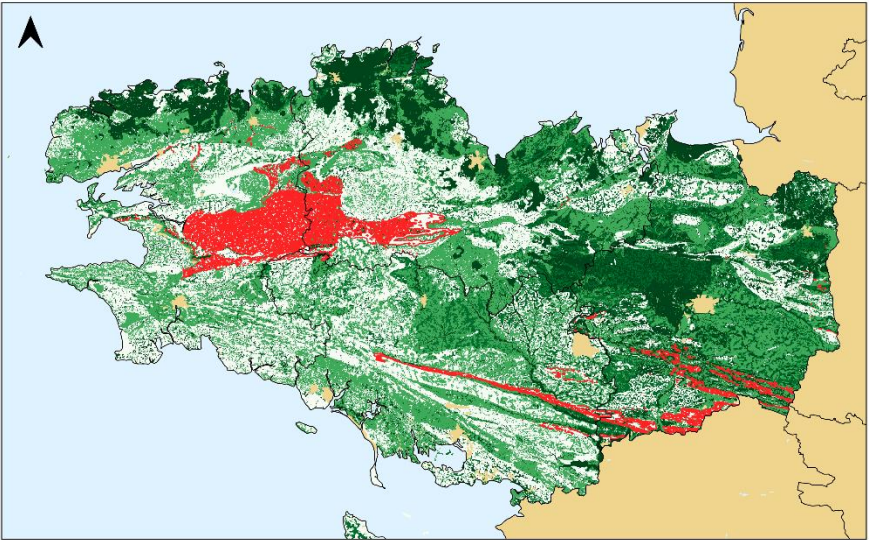


# Results : suitable soils

RANKOSOL à horizon A humifère issu de schiste gréseux ou cornéenne parfois altéré

N°67

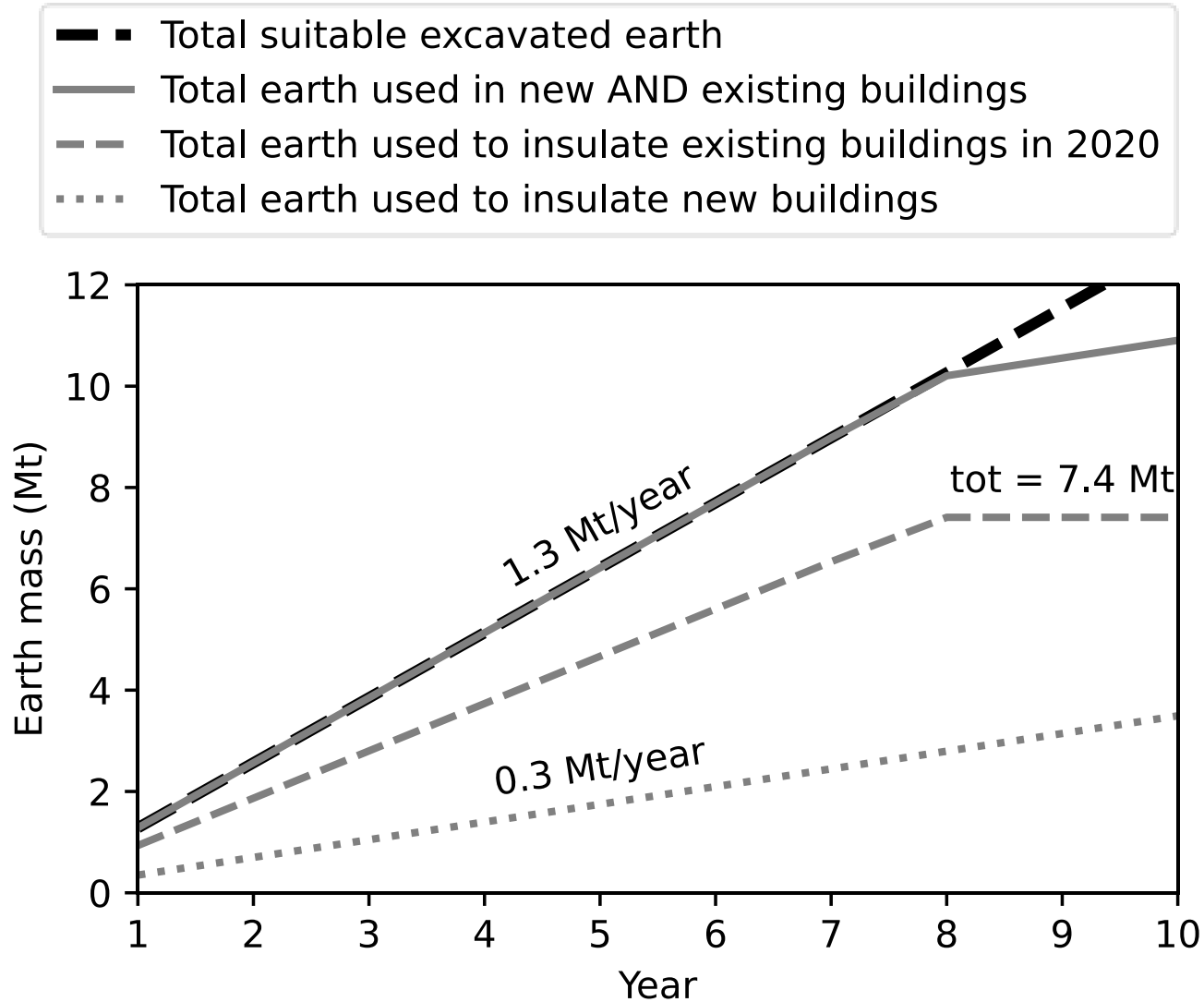
		F <sub>50/2000</sub>	CEC	OC	F <sub>2000/D</sub>	T	Suitable
0	1						
		A					
		32	13.2	30.4	17	28	No
28	2						
38		46	7.03	1.8	40	-	No
		Total surface				Suit. volume	
		162 km <sup>2</sup> (0.6%)				0 km <sup>3</sup> (0%)	



## Results : horizon type suitability

Horizon type	% volume in database	% volume suitable
A	33	67
E	5	7
B	15	93
O	1	2
S	44	27
X	3	0

# Results : excavated earth



Data :  
Verron et al. 2022  
Hamard et al. 2018  
CGDD 2014  
INSEE 2017, 2020



# Conclusion

Suitable soil is abundant and well distributed

- **No need for long-distance transportation**

Soil is a fossil resource, but local excavated soil flows are more than sufficient for (light-)earth building needs

- **No need to excavate soil**

Provided **soil reversibility** is not impaired and **excavated soils** are privileged, earth building **does not enter in competition with other soil uses.**

## **Funding**

These results were part of the Eco-Terra research project, funded by ADEME

## **Acknowledgments**

AGROCAMPUS Ouest, Samuel Dugelay, Corentin Mouraud and Fabrice Auvé



**Loris Verron**

loris.verron@univ-eiffel.fr

0602665039